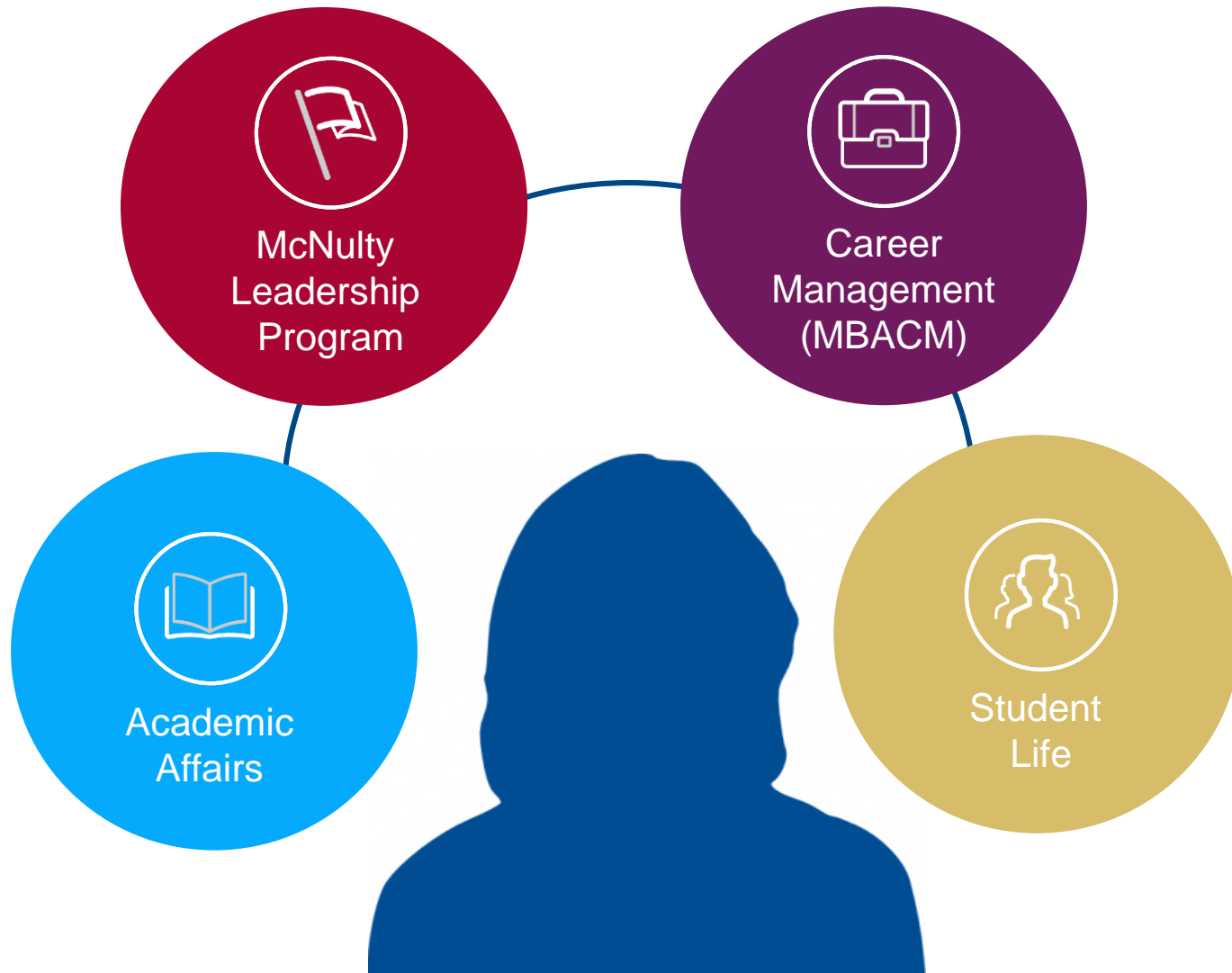




Your MBA Advising Support Network

Pre-Term 2017

Your Wharton Advising Support Network



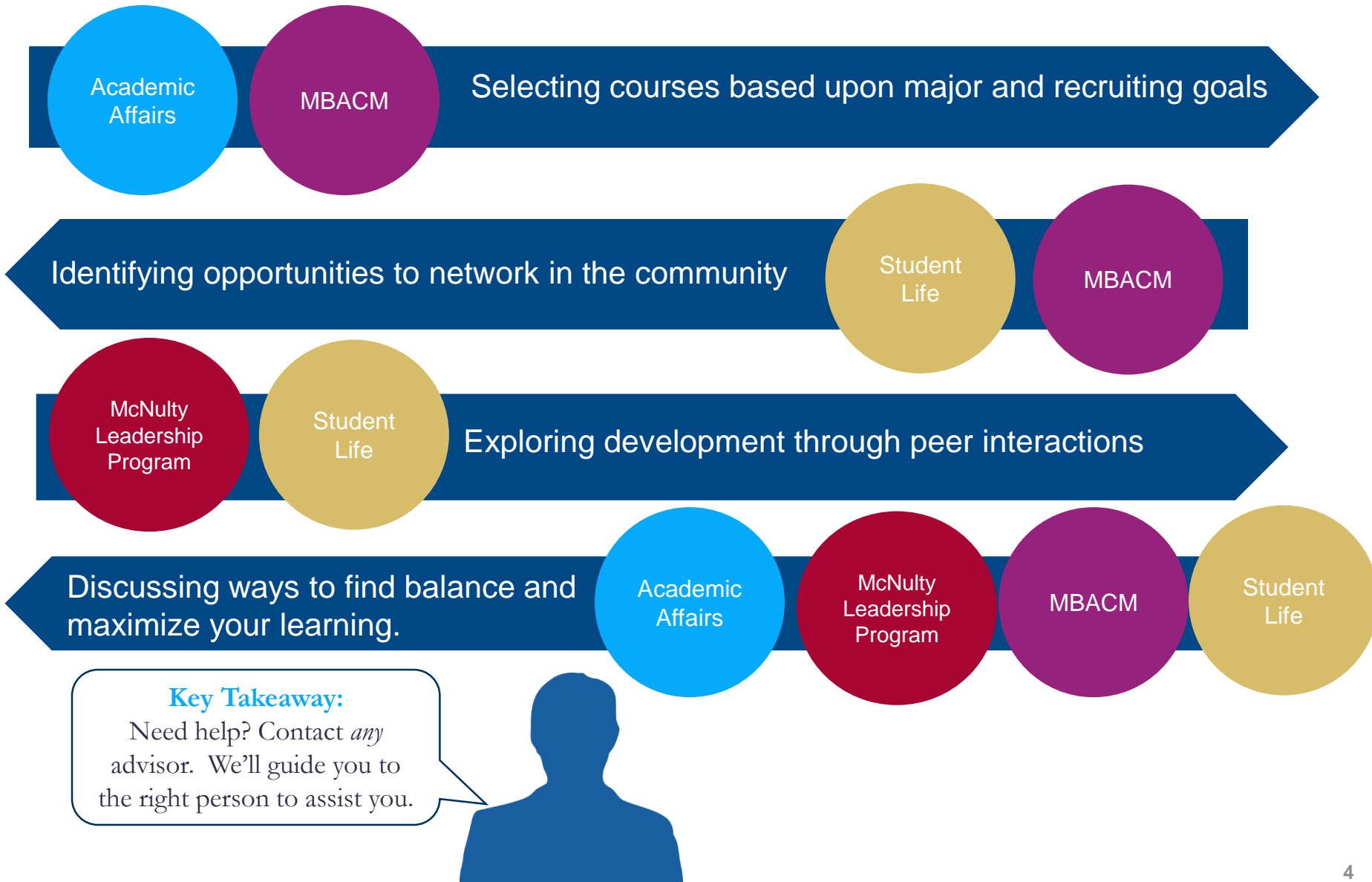
Your Wharton Advising Support Network

Ensure you get the most out of all aspects of your Wharton experience – academics, leadership, careers, student life.

Direct and connect you to the resources you need to be successful at Wharton and beyond.

Provide you with a support network to help you develop and achieve your goals.

How You Will Engage With Your Advising Network





Academic Advisors



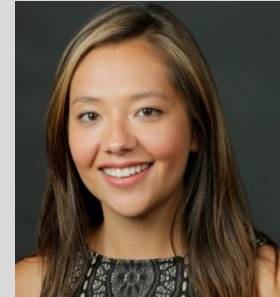
Lisa Rudi
Cluster 1
Dual Degrees



Michael Peterson
Cluster 2
Academic Operations



Natalya Levina
Cluster 3
International Exchange



Amy Miller
Cluster 4
Global Immersion Programs



Academic Advisors

HOW WE'LL PARTNER



- Communicating program requirements
- Advising students in their personalized course selection and helping them implement it.
- Supporting students in all issues pertaining to their academic performance and experience.


AVAILABILITY AND APPOINTMENTS



- Jon M. Huntsman Hall, Suite 300 – Monday-Friday, 9:00am-5:00pm
- By appointment via online Academic Advisor Scheduler
- Walk-In Hours with an Academic Advisor every Monday – Thursday from 12:00– 1:00pm and 3:00– 4:00pm



Leadership Advisor



Lynn Krage
Clusters 1-4
MBA Leadership
Development



Leadership Advisor

HOW WE'LL PARTNER

- Assessing the impact of your behaviors, including personality, capabilities, opportunities for development
- Setting professional development goals
- Development planning

AVAILABILITY AND APPOINTMENTS

- Jon M. Huntsman Hall, Suite G47---Monday to Friday, 9am to 5pm
- By Appointment
- Open Office Hours: Tuesday, Noon to 1:30pm



Career Management Advisors



Todd Carson
Private Equity
Venture Capital
Real Estate



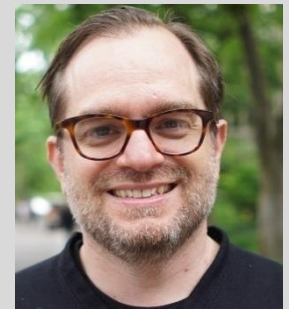
Robyn Ettinger
Consulting
Media & Entertainment



Elissa Harris
Consulting



Manisha Jain
Energy
Health Care



Sam Jones
Technology



Jessica Katz
Investment Management
Hedge Funds
Undecided



Jenn Savoie
Entrepreneurship
Startups
Social Impact



Sunshine Singer
Investment Banking
Sales & Trading



Sugirtha Stathis
Consumer Products
Retail
General Management



Career Management Advisors

HOW WE'LL PARTNER



- Assess your skills and interest
- Deliberate potential career paths
- Provide industry/functional/company perspective
- Discuss how to handle specific employer situations
- Keep you motivated throughout recruiting process

AVAILABILITY AND APPOINTMENTS



- McNeil Building, Suite 50 – Monday-Friday, 8:30am-5:30pm
- By appointment, office hours, and advisor on call (Friday only)
- Schedule appointments via CareerPath

Student Life Advisors



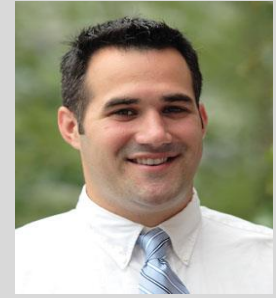
Alex Richardson
Cluster 1
Clubs/Conferences
Marketing &
Communications



Kristen Auch
Cluster 2
Alumni Relations
Diversity



Larry Rappoport
Cluster 3
Communications
Lead
Leadership Lectures



Eric Morin
Cluster 4
Team Lead
2401 Walnut



Student Life Advisors

HOW WE'LL PARTNER



- Get to know you and your goals
- Review priorities and set expectations for the year
- Advice on Student Life activities (clubs, etc.)
- Help create your best possible version of Wharton

AVAILABILITY AND APPOINTMENTS



- Hours/locations vary by advisor. Please see them for details.
- Schedule appointments through the Appointment Scheduler (MBA-Inside, SPIKE, or weekly email)

Academic
Affairs

McNulty
Leadership
Program

MBACM

Student
Life

Contacting Your Team

Department	Contact Information	Location	Business Hours	Appointment Types
MBA Career Management	Tel: 215-898-4383 Email: mbacareers@wharton.upenn.edu Web: https://students.mbacareers.wharton.upenn.edu/	McNeil Building, Suite 50	Monday-Friday, 8:30am-5:30pm	Scheduled appointment, Office hours
Academic Affairs	Tel: 215-898-8604 Email: mbaprogram@wharton.upenn.edu Web: https://mba-inside.wharton.upenn.edu/academics/	Huntsman, MBAPO Office - Suite 300	Monday-Friday, 9:00am-5:00pm	Scheduled appointment, Walk-In Hours
Student Life	Tel: 215-898-9521 Email: alexric@wharton.upenn.edu auchk@wharton.upenn.edu lrappo@wharton.upenn.edu emorin@wharton.upenn.edu Web: https://mba-inside.wharton.upenn.edu/studentlife/	Huntsman, MBAPO Office - Suite 300 2401 Walnut, Offices 804, 806, 808, 812	Monday-Friday, Hours vary by AD	Scheduled appointment
Leadership	Tel: 215-898-4054 E-Mail: lkrage@wharton.upenn.edu	Huntsman G47	Monday-Friday	Scheduled appointment



PLAN ACADEMICS

The Curriculum

Navigate fixed and flexible core and more

Course Match

Optimize your schedule

International Opportunities

Learn about global business environments



MANAGE YOUR CAREER

Conduct Research

Job search and networking resources

Recruiting Tools

Recruiting calendars, policies, and tools

Events

Workshops and recruitment events



EXPLORE MY WHARTON

Leadership

Ventures, coaching, fellows, and more

Student Resources

Campus life and more

Wharton Groups

Conferences, clubs, and activities



Academic Advising

Meet with an advisor



Career Advising

Map your career goals



Student Life Advising

Set up a time to chat

EXPLORE MAJORS AND MINORS

VISIT MBACM

VISIT STUDENT LIFE