

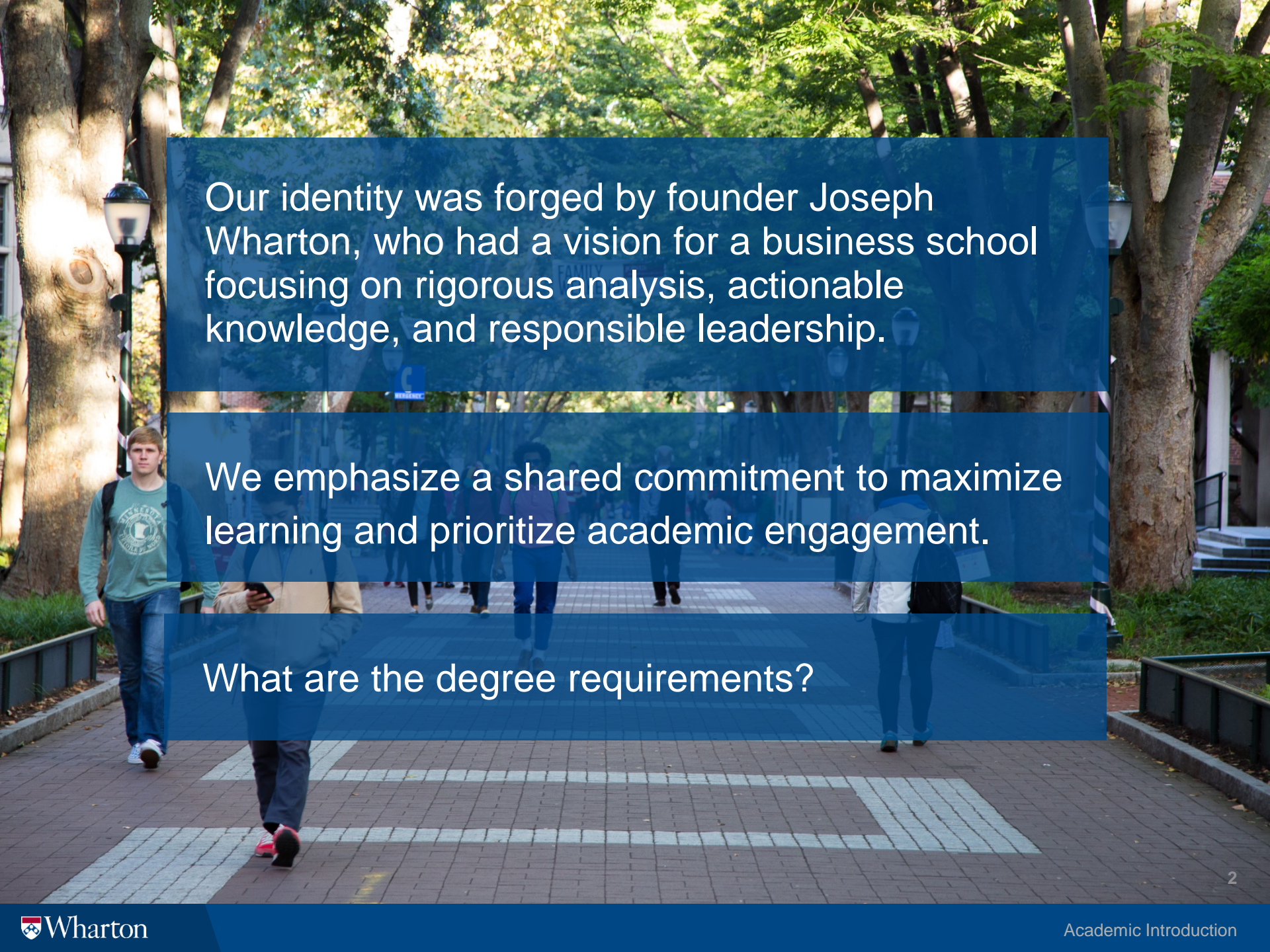


Academic Introduction

Stephan Dieckmann

Deputy Vice Dean of Academic Affairs

August 8, 2018



Our identity was forged by founder Joseph Wharton, who had a vision for a business school focusing on rigorous analysis, actionable knowledge, and responsible leadership.

We emphasize a shared commitment to maximize learning and prioritize academic engagement.

What are the degree requirements?

19

21



Majors

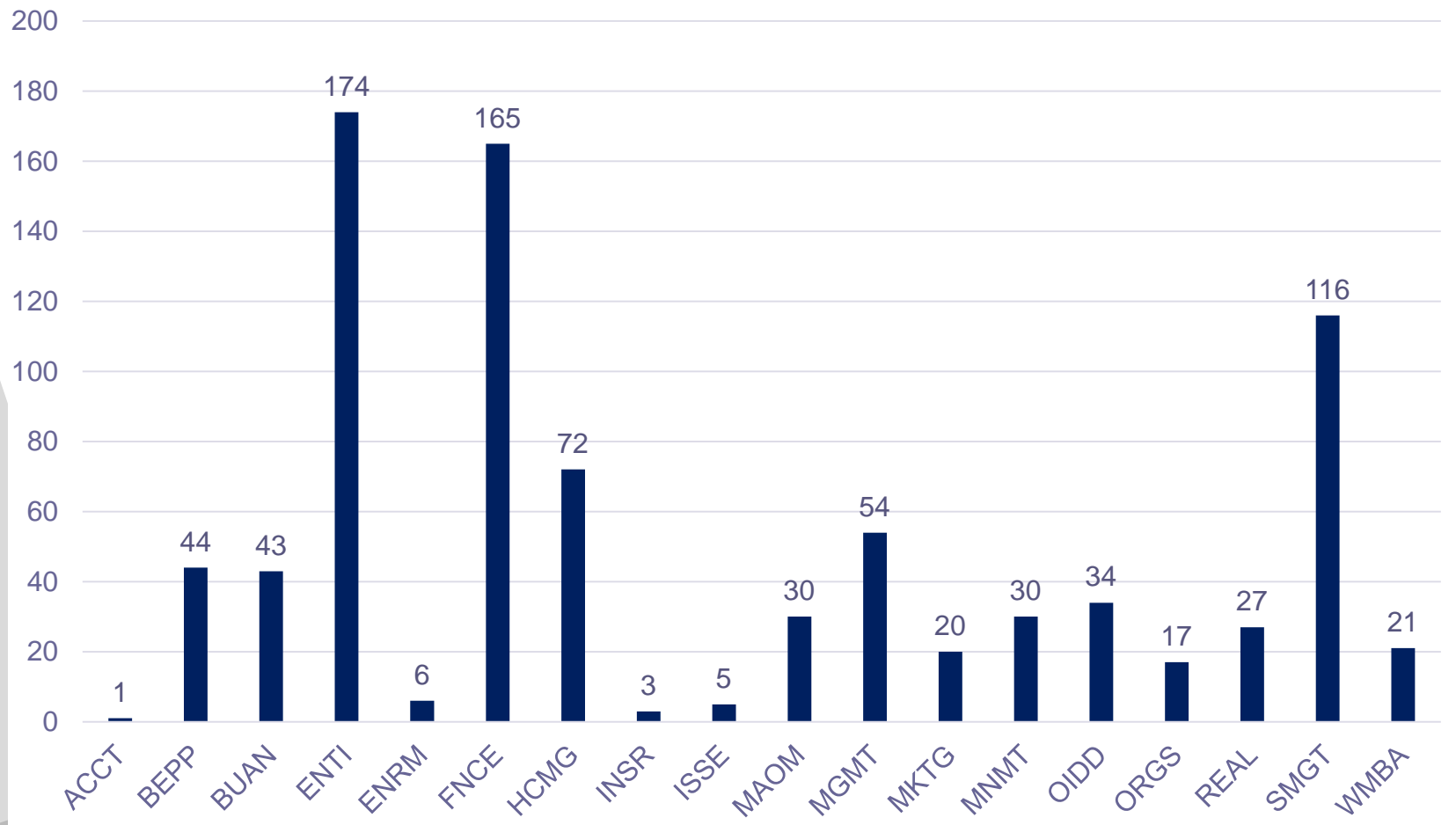
A major is an area of academic study chosen as a field of specialization, sometimes referred to as “concentrations” in other educational systems.

Your major(s) is listed on your official transcript.

There are 19 majors offered at Wharton.

An individualized major can be developed with faculty approval.

Do you remember what major you selected when applying to Wharton?



Majors

Classification of instructional programs (CIP) information:

As of August 1, 2018, the MBA majors in Business Analytics, Statistics, Actuarial Science, and Business Economics & Public Policy, have a CIP code designation under which you may qualify for a STEM OPT extension.



Pivot into a career in computing and technology

MBA/Master of Computer and Information Technology

A powerful combination - business leadership and strong technical skills are needed in many areas of data and analytics.

Features

Interested students have little or no background in Computer Science, and seek out computer science coursework to start a successful career in computing and technology. Students can earn both degrees in 4 or 5 semesters, requiring 15 credit units of coursework at Wharton, and 9 in the Department of Computer and Information Technology, Graduate School of Education.

MBA/MCIT Info Session

August 23, 11am

Huntsman Hall, G65

PATH 1

Starting at Wharton and applying to CIS in your first year

YEAR 1	Fall / Wharton / CIS	Spring / Wharton / CIS
YEAR 2	Wharton / CIS	Wharton / CIS

PATH 2

Starting at Wharton and applying to CIS in your first year

YEAR 1	Fall / Wharton	Spring / Wharton
YEAR 2	Wharton / CIS	Wharton / CIS
YEAR 3	CIS	

For more information, please contact Lisa Rudi in MBA Academic Affairs, lrudi@wharton.upenn.edu.



Explore, Build, Test, and Scale Education Solutions

MBA/M.S.Ed. in Education Entrepreneurship

Students pursue the goal of driving meaningful and innovative change in education

Features

The M.S.Ed. in Education Entrepreneurship provides students with the skills and knowledge to generate innovation in education, preparing them to be the next generation of creative leaders. Students can earn both degrees in two years, requiring 15 credit units of coursework at Wharton, and 9 at the Graduate School of Education.

PATH 1

Starting at Wharton and applying to GSE in your 1st year

YEAR 1	Fall / Wharton	Spring / Wharton	Summer / GSE
YEAR 2	Wharton / GSE	Wharton / GSE	Summer / GSE


PATH 2

Applying to Wharton and GSE concurrently, starting at GSE

YEAR 1	Summer / GSE	Fall / Wharton / GSE	Spring / Wharton / GSE
YEAR 2	GSE	Wharton	Wharton

For more information, please contact Lisa Rudi in MBA Academic Affairs, lrudi@wharton.upenn.edu.





Wharton has expanded the opportunities to study in San Francisco to Fall and Spring.

In Spring 2019, we plan to offer classes in the areas of Entrepreneurship, Analytics, Tech, and Finance.

**SSF Info Sessions
August 21 & 22, 11am
Huntsman Hall, G60**

Getting the most out of your classes

Concert Rules, Attendance,
Pedagogy, Preparation

Concert Rules

Class starts and ends on time. Students and faculty are expected to be prompt.

Students sit according to a seating chart.

Students remain in attendance for the duration of class, except in an emergency.

Students display name tents.

Phones must be turned off and put away.

Laptops and tablets are not allowed unless for educational purposes as permitted by the professor.

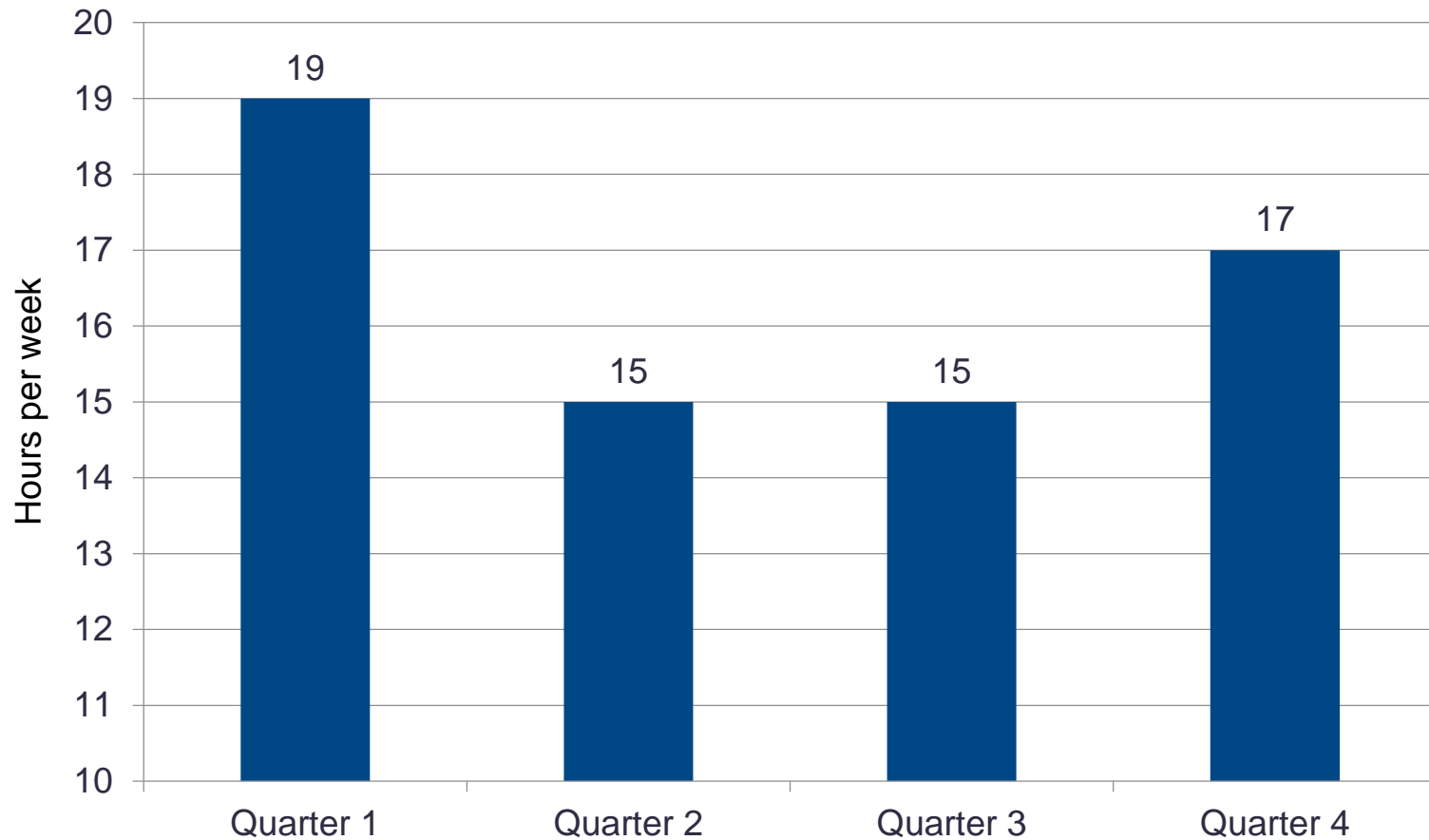
MBA Program Attendance Policy

Applies to fixed core classes, in that MGMT 610, MKTG 611, STAT 613, STAT 621, MGEC 611, and MGEC 612 require student attendance.

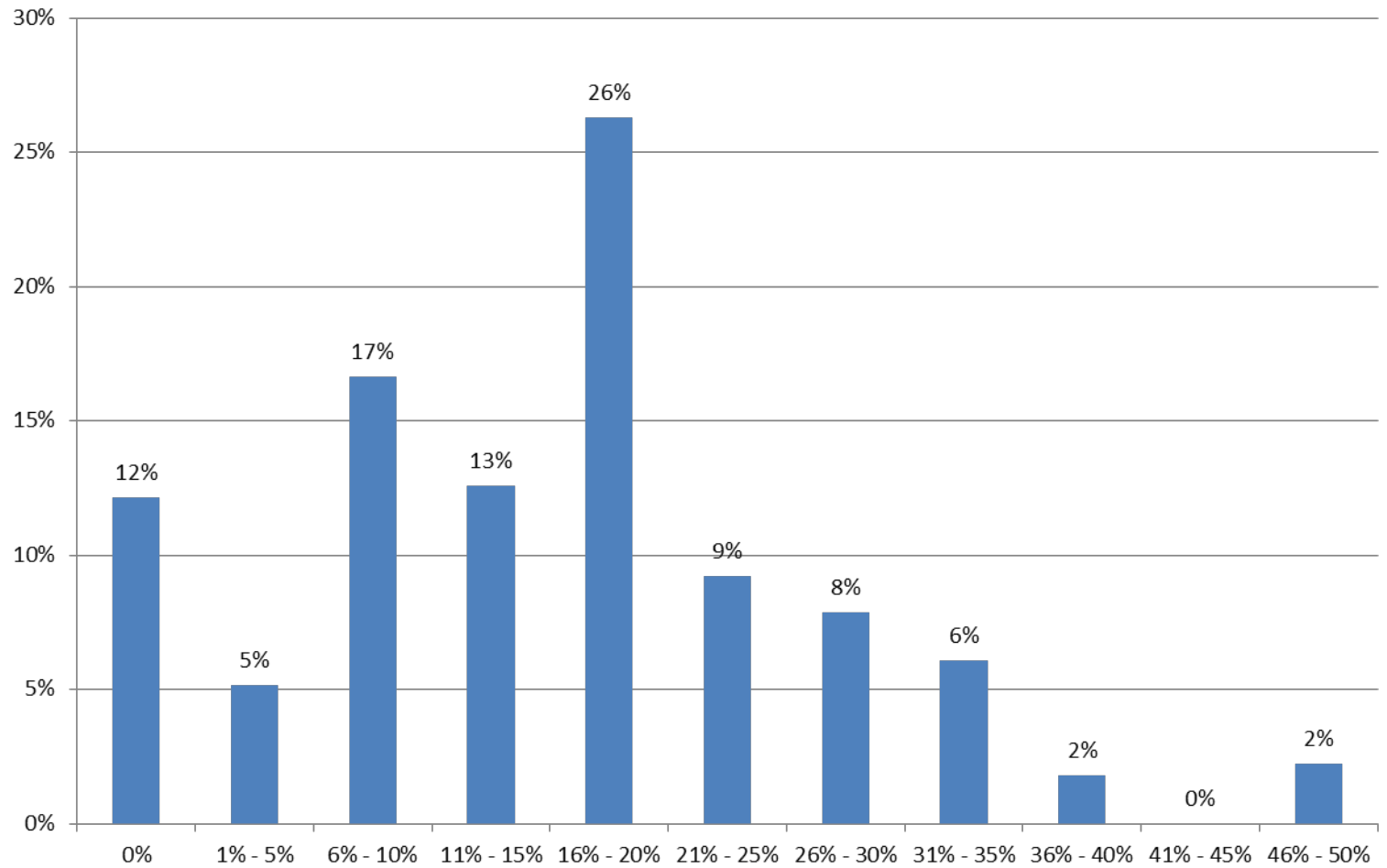
Grade point average and class attendance will be among the selection criteria used to select Fellows in the MBA administration and participants in exchange programs and the semester in San Francisco.

Several types of absences warrant excuses, such as Personal Illness, Personal Emergency, or Religious Holidays. Absences due to job interviews, career pursuits or travel are not excused.

How busy will you be preparing for class?



Pedagogy



Weights on Attendance and Participation

Pedagogy

Case Method Workshop on August 9:

The goal of the workshop is to introduce you to the case method and to discuss strategies for efficient class preparation and participation. The workshop is moderated by the Natalya Vinokurova, Assistant Professor of Management and a learning instructor from the Weingarten Learning Resources Center.

Weights on Attendance and Participation



EMILIE FELDMAN
Associate Professor of Management

**teaches Corporate Development
Mergers and Acquisitions, MGMT 721,
this Fall in Philadelphia, and Spring in SF**

Goal Setting

What are the ways you can leverage the Wharton academic experience to realize your career trajectory?

How will you balance your academic priorities with your intellectual curiosity?

My Wharton: Maximizing learning

Why Grades Matter

We Celebrate Academic Performance

Grading System

Courses are graded on a letter grade system of A through F.

Classes with an MBA enrollment of 20 or more, the GPA must not be greater than 3.33.

F grades do not earn credit toward graduation.

Pass/fail option: Students can take up to 1CU per semester on a pass/fail basis. Passing grades are not included in GPA calculations and are not eligible for LT designations but failing grades are included.

Students who withdraw from a course after the semester has begun may receive a grade of W (Withdrawn) on their transcript. A course can not be dropped once the last class took place.

“Wharton students are free to disclose any aspect of their own academic transcripts to prospective employers or any other interested parties, and are encouraged to do so. Such disclosure is a legal right and it is Wharton policy to protect this right. Prospective employers are free to request from students any aspect of their academic transcripts.”

— WHARTON SCHOOL GRADE DISCLOSURE POLICY

Minimum Academic Standards

Based on LTs (**Lowest Ten Percent indicators**), not GPA

Faculty must award in classes with 20 students or greater

Probation

2.5cu or more of LT - 1st semester

4cu or more of LT - 1st year

6cu or more of LT - 3rd semester

2 or more F grades in any grading period

Some scholarships require a student to avoid probation

Dismissal

5cu or more of LT indicators in first year or F grades without LT

3 F grades or more in any two contiguous grading periods

2 F grades after being placed on probation

8cu of LT indicators in second year or F grades without LT

We celebrate academic excellence in many ways

Palmer Scholars

Director's List

First Year Honors and Graduation with Honors

Director's List Fellowship


Ford Fellowship

Academic Excellence Fellowship

Isik Inselbag Fellowship

McGowan Fellowship





Please join me and my colleagues in
MBA Academic Affairs for the following sessions
during Pre-term

Core Curriculum & Majors

Ethics

Course Match (tomorrow)

Case Method Workshop (tomorrow)

Academic Advising (starts August 12)