



Office of Student Life Presents:



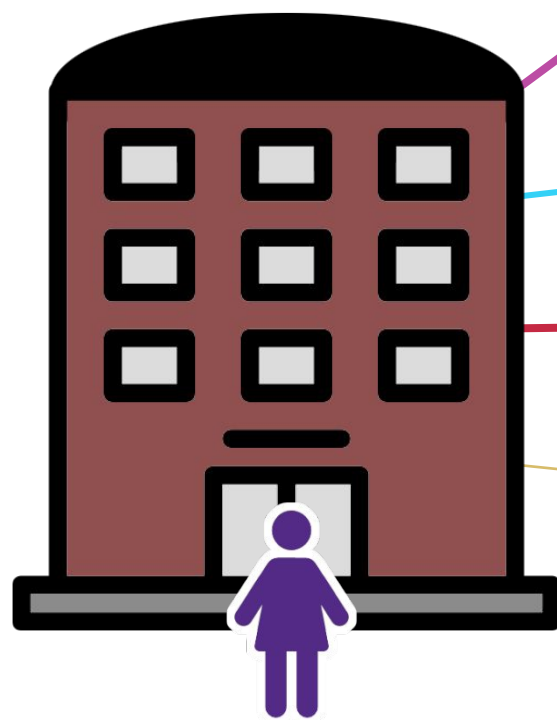
WG23 Partner's Orientation

Meet The Office of Student Life Team



Role of Student Life – Navigating a Big School

Wharton can feel big and overwhelming...



How do I get involved?

Am I using my time effectively?

Where do I go to meet people?

Where do I go for help?

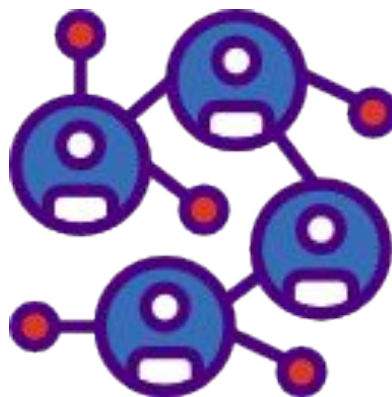
What do I do when I am overwhelmed?

...our office helps you get the resources you need, when you need them.

Role of Student Life – Our Mission



Community

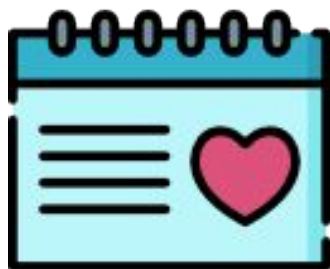


Connection



Affinity

Role of Student Life – How Do We Do This?



Opportunities



Support



Connections



PRETERM WG'23-KEY DATES

WG' 23 Convocation

AUGUST 18, 6 to 7 pm at Penn Commons

Convocation Reception

AUGUST 18, 7 to 8 pm at Penn Museum

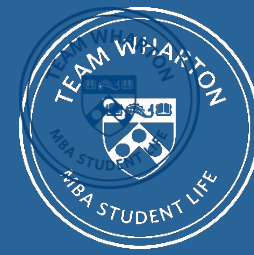
Wharton Olympics

AUGUST 28, NOON to 4 pm at Penn Park

Time to get the 411 about Wharton!



Wharton Partners Club: Meet the Orientation Team



CAITLYN BERG



HYUNGSUP CHO

University

College of William &
Mary

Texas A&M
University

Job

Executive Assistant, CFO (InsurTech)

Project Engineer
(Civil/Structural)

**Wharton
Clubs**

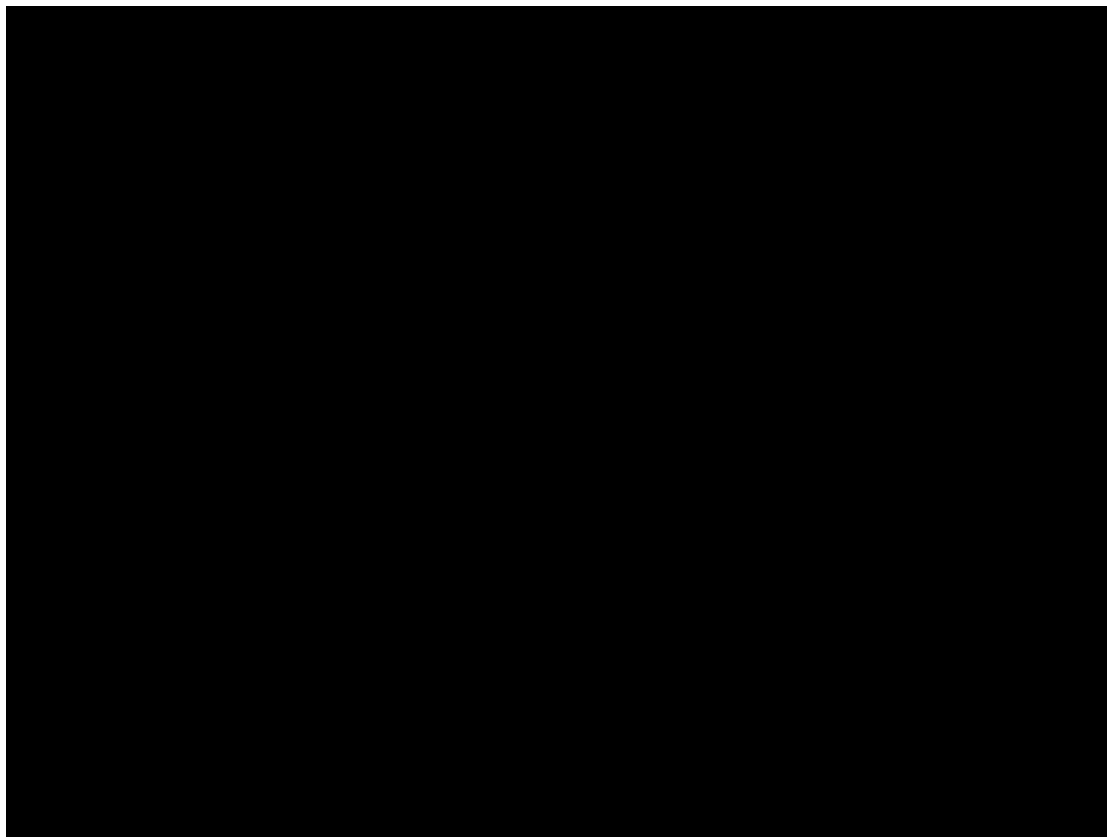
Partners Club, Food Club, Wine Club,
Wharton Christian Fellowship

Partners Club, Board
Games Club, eSports Club

**Favorite
Wharton
Experience**

Cook Book Club with other
Partners

Various Partners
Club Sport Leagues





Ice-Breaker: What's in a name?

What's In A Name?

Goals

- Go beyond sharing introductory information
- Share something relatively personal yet safe
- Start talking around identity and difference
- Foster a stronger sense of belonging



What's In A Name?

In a group of 4 – 5, have everyone introduce yourself by providing the history of your name. Spend no more than a minute or two per person.

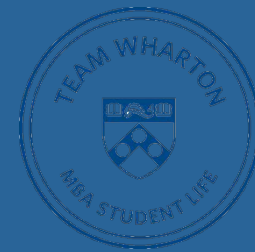
Use the following questions as a guidelines:

- Where did you get your name from?*
- How is your name pronounced?*
- Were you named after anyone? If so, who?*
- What do you love about your name?*
- What are some things that frustrate you about your name, if any?*
- What are some misconceptions, if any, about your name?*
- What does your name mean to you?*



Wharton Partners Club Overview

- Opportunities to **socialize with other partners and students** at:
 - Small Group Meetups
 - Brunches
 - Axe throwing
 - Happy hours
 - Sports Leagues
 - Potlucks
 - Beer gardens
 - “Beyond the Bubble” group outings
- Build your **professional network**
- **Give back** to your community at volunteer events
- Serve on the **WPC Board**



Joining Wharton Partners Club

Benefits

- Community: make friends with others who are going through a similar transition
- Network: connect with partners professionally from diverse backgrounds
- Frequent Events: small group meet ups: dinner, game nights, wine nights, Philly suburb trips/hiking and more! Join us every week as we explore Philadelphia and make the most out of the Wharton experience.

Cost of Joining:

- Regular Member → \$120 1 year / \$200 2 year
- Regular Member + Slack → \$177.50 /1 year
- NYC Partner → \$50
- Remote Partner → \$30
- Kids Club → \$50 / \$75 2 year
- Partners + Kids → \$160 1 year / \$250 2 year
- Slack Only → \$57.50



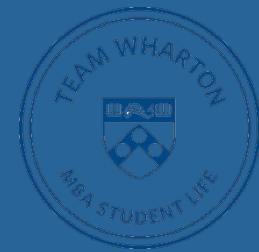
Joining Wharton Partners Club

How to Sign Up for Partners Club + Other WGA Clubs

Join us for Club Pub on September 9th!

If you can't make it, no worries!

- [Sign up for WGA on CampusGroups](#)
- Sign up for Partners Club on CampusGroups starting September 10th after Club Pub
- Partners are encouraged to sign up personally
- After signing up for the club, make sure to join the groupme, and stay tuned for events and Board sign ups!
- Join "Freemium" [GroupMe](#) now (deleted after Sept), paid members will get access to new GroupMe



Slack - Access (Optional)

- Wharton switched to an enterprise grid system in 2020
- Cost → \$57.50 per person
- WPC will NOT use slack to communicate (we will use GroupMe and Email)
- Most Clubs use email and GroupMe / WhatsApp
 - Some clubs use slack
 - During Club Pub ask the clubs you are interested in how they plan to communicate
- In order for Wharton Computing to add partners to Slack, they will go through a one to two month process that will require getting partners PennKeys prior to their access to Slack. Due to this requirement, they have asked us to set an enrollment deadline so they can obtain our membership roster and enroll all partners at once.
 - The deadline to register is **Sunday, 9/26 at midnight ET.**



Joining the Wharton Partners Club Board

Joining the Board is a lot of fun and you get to shape the club!

Open Positions:

- Social Directors (2 positions for first year partners)
- Remote Partner Directors (2 position for first year partners)
- NYC Partner Social Directors (2 positions for first year partners)
- Philanthropy Directors (2 positions for first year partners)
- Welcome to Wharton Directors (2 positions for first year partners)
- Marketing & Communications Directors (2 positions for first year partners)
- Treasurers (2 positions for first year partners)
- Sponsorship & Partnership Directors (2 positions for first year partners)

How to Apply

- Applications will go live late September and close in early October.
- Short written application and call with current members of the board

Wharton Partner Club Fun!



Partners Can Join Any Club!



INSPIRING TRANSACTIONAL LEADERSHIP



WHARTON REAL ESTATE CLUB



The Wharton COCKTAIL CLUB



Thank you!



SMITH SOC — WHARTON



Wharton Kids Club: Meet the President



Kim Wilson

University

Arizona State University - Undergrad
Harvard Business School - MBA

Job

Product Management, Amazon

Wharton Clubs

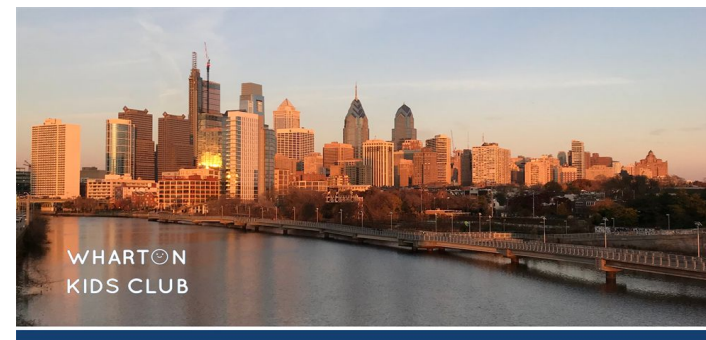
Partners Club, Kids Club, Wine Club

Favorite Wharton Experience

Spring Break Trip with other Wharton Partners and Students

Wharton Kids Club

- Fantastic way to connect with other Wharton families
- Receive weekly emails about Wharton-specific events and activities to do around Philly for that week!
 - Welcome Social
 - Halloween Party with OSL
 - Fall Apple Picking Outing
 - Winter Holiday Celebration
 - Valentine's Day Brunch
 - Spring Egg Hunt
 - Farewell Extravaganza
 - Numerous playdates at various Philly locations
 - Parent night outs!
- Official sign-ups in early September. PLEASE JOIN!
- If you are interested in joining the leadership team contact Kim (kim.capp.wilson@gmail.com).
- Kids Club GroupMe & Facebook: [GroupMe](#) | [Facebook](#)





Philly 101



Philly 101 - [PennCard](#)

Spouses/domestic partners and minor children of faculty, students, staff, and alumni may obtain a PennCard.

- Both the PennCard holder and the spouse or partner must come to the PennCard Center.
- The PennCard holder must bring their valid PennCard and their spouse/partner must bring a valid government issued photo I.D.
- Bring documentation that shows proof of marriage or partnership. Acceptable documentation (which must show the same last names or both last names) includes a marriage certificate, a shared lease, a shared bank or credit account or a passport coded for partner or spouse (J2 or F2).
- A PennCard will be issued that will expire when the sponsoring PennCard holder's card expires.
- There is a \$30 charge for the card and this charge may be paid by cash, check, Visa or MasterCard by the cardholder.

Philly 101 - Best Bars/Happy Hours



- Frequent Wharton bars
 - Bonner's Irish Pub
 - Drinker's Pub
 - Voyeur (Go to place for Dancing)
- Best Happy Hour Spots
 - Tria (Wine and Cheese Bar)
 - Black Sheep Pub (Good burgers)
 - Frankford Hall (Outdoor & Games)
 - Harp and Crown (Everyday & Great Prices)
- Places to Watch Sports
 - Cavanaugh's Rittenhouse (Outdoor Tables)
 - Devil's Alley (Big Outdoor TV)



Philly 101 - Hair Stylists



Bobby Mack & Co

1944 South St



Salon Bass

2056 Pine St



(hush) SALON PHILADELPHIA

Hush Salon

128 N 3rd St



Francis Salon

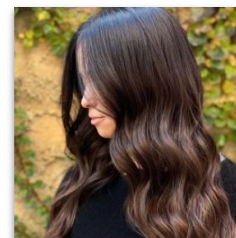
2405 Chestnut St



ARCHITEQT
SALON & GALLERY

Architeqt Salon & Gallery

265 S 10th St



Adolf Biecker
SPA / SALON

Adolf Biecker

1605 Sansom St

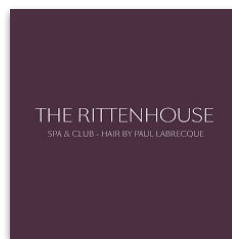


Philly 101 - Beauty Parlors



Coco Blue

1326 Spruce St



Rittenhouse Spa

210 W Rittenhouse Sq



19 Nails

770 S 19th St



Rescue Spa

1601 Walnut St 3rd Floor



Body Beauty Lab

834 Chestnut St



Philly 101 - Barbers



NIC
GROOMING
—
BARBERSHOP



Nic Grooming Barbershop

2042 Sansom St



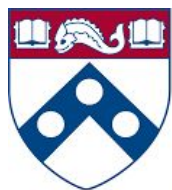
The Barberie

220 S 20th

Philly 101 - Doctors



- Dentist
 - Razavi Dental
 - Anthony Petchalonis
- Dermatologist
 - Ringpfeil
- OBGYN
 - Renee Anderson (Penn)
 - Ariella Glazer (Penn)
 - Rittenhouse Women's Clinic



Penn
Medicine

Philly 101 - Vets



World of Animals

408 S 20th St



VCA Cat Hospital

226 S 20th St



Ryan Veterinary Hospital

1944 South St



Washington Ave Animal Hospital

1920 Washington Ave

Philly 101 - DMV



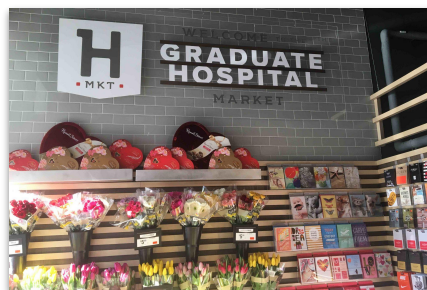
- Process
 - If you have a car and want to get street parking (\$35 a year) you must follow these steps:
 - Get a PA license
 - Change the Title / Registration of your Car to PA
 - Get an inspection for your car
 - Purchase residential parking permit
- DMV Locations
 - South 70th - 2904 S 70th St, Philadelphia, PA 19142
 - King of Prussia DMV Center - 143 S Gulph Rd, King of Prussia, PA 19406
 - Real ID Center - 30 min away but worth it given the size. Ask them to print the license there, SUPER picky about documents, all docs have to be printed
- Licensing Center Locations
 - [Jacoby's Auto Tags & Sales](#) (King of Prussia)
- Residential Parking Permit (Street Parking)
 - [How to Apply](#)

Philly 101 - Best Grocery Stores



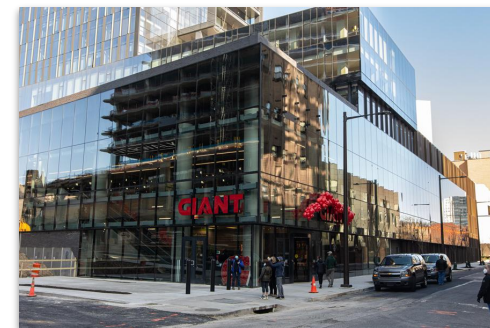
Trader Joe's

2121 Market St



Giant Heirloom Market

3303 Bainbridge St



Giant

60 N 23rd St



Sue's Produce Market

114 S 18th St

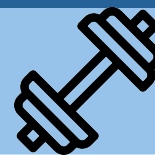
Philly 101 - Places to Eat



- Breakfast/Coffee
 - Parc
 - Rival Bros. Coffee Car
 - Cafe La Maude
 - Good Karma Cafe
 - K'Far
 - Spread Bagelry
 - Ultimo Coffee
- Lunch
 - LeBus
 - Middle Child
 - Goldie
 - Woodrows
 - Tortorice's Specialty
 - The Love
- Dinner
 - Barbuzzo
 - Vernick
 - Amis
 - Chick's
 - Talulah's Garden
 - DanDan
 - Bing Bing Dim Sum
 - Suraya
 - Dim Sum House By Jane G's
 - JJ Thai (BYOB)
 - Pumpkin (BYOB)
 - SouthGate
 - Little Nonna's
 - El Rey
 - Ambrosia (BYOB)



Philly 101 - Gyms



City Fitness

2101 South St



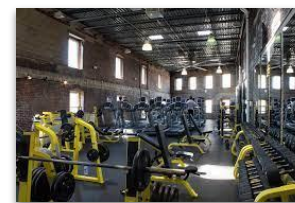
The Sporting Club at The Bellevue

224 S Broad St



Amrita Yoga

1204 Frankford Ave



Sweat Fitness

200 S 24th St



Five Iron

2116 Chestnut St

Philly 101 - Tourist Spots



- Hiking
 - Wissahickon Valley Park
 - Valley Forge National Park
 - Ridley Creek State Park
- Famous Locations
 - Independence Hall/Liberty Bell
 - Art Museum (Rocky Steps)
 - Betsy Ross's House
- Fun Activities
 - Reading Terminal Market
 - Philadelphia Zoo
 - Adventure Aquarium
 - Please Touch Museum
 - Franklin Square
 - Mini Golf
 - Franklin Fountain





Upcoming Events

- Small Group Dinners
 - Tonight!
- Meet Up at Drinker's Pub
 - Tonight 9:30 pm!
 - Limited Tab
- Kids Club Welcome Picnic - 8/21
- Club Pub - 9/9
- Welcome Party 9/17 - details will be shared via GroupMe
- Thursday Happy Hours at Rittenhouse Park



Stay Connected

- Wharton HQ
- [GroupMe](#)
- [Facebook](#)
- [Instagram](#)
- E-mail us: wgpartnersclub@gmail.com
- Caitlyn Berg: 804-313-7864, cberg1021@gmail.com
- Hyungsup Cho: 214-551-3890, hyungsupc@gmail.com

Meet the Panelists:



Caitlyn Berg



Erik Berg



Hyungsup Cho



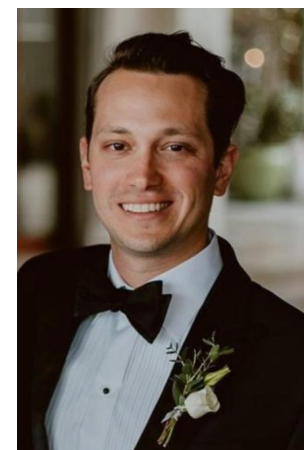
Kim Wilson



Bob Reish



Nikki Markim



Javier Gonzalez



Reciprocity Exercise

- Find a post-it near you and write your 'ask' on it.
 - Add your full name next to the ask.
- Once everyone has added on 'ask', walk around the room and review asks from others:
 - If you can help with ask, write your full name in the offer 'column'
 - It is OK to add your name even if another name is already listed for the ask - scheduling is tricky business!
- We will share the matches via email.