The background of the entire page features a blue and yellow Sasin flag waving in front of a modern glass skyscraper. The flag has the word 'Sasin' in large gold letters and a circular emblem with a bird. The building has many windows reflecting the sky.

## Fact sheet 2023-2024

December 2022

# Welcome to Sasin

*Bangkok, Thailand*

Enjoy your time in one of  
Asia's most livable city



# Why Bangkok?

**Sasin School of Management is located in the heart of Bangkok, Thailand:** a modern, cosmopolitan metropolis with a rich history and culture. As the most visited city in the world, the logistics hub of ASEAN and one of the most dynamic cities in Southeast Asia, it is fun, exciting, vibrant and one of the most international and livable cities in the region.

Established in 1917, Chulalongkorn University is Thailand's oldest and most prestigious academic institution, located on a spacious campus in Bangkok's Central Business District.

Sasin occupies a prime position on that campus, combining a peaceful park-like setting with easy access to major office and shopping centers.

Bangkok's modern and efficient skytrain and metro systems are a 5-10 minute walk away - just a few minutes by the university's free electric shuttle service.



with over  
**750,000**  
expats

Competitive  
**COST OF LIVING**

## Why Sasin?

Established through a partnership of



**Thailand's first globally accredited business school**

One of the few Southeast Asian business schools with the top two global accreditations



**1<sup>st</sup> BSIS Impact School in Southeast Asia**



World's Top  
**100**  
Asia's Top  
**10**



**Global MBA Rankings 2021**  
for Entrepreneurship & Alumni Outcomes and Class & Faculty Diversity

**40+**  
global partners  
in 19 countries

**60%**  
of our courses  
taught by visiting professors from top schools  
in North America, Europe, and Asia.

**5,000+**  
Alumni  
unrivaled network across the region  
and around the world



## Nomination Process

The Sasin Exchange Coordinator will email all partner institutions to fill out a nomination form. After we agree and/or accept your nomination, students will receive their online application link to their email.

## Students register (online application)

Our application process is completely online. Nominated students will an email with instructions on how to register on our portal. Initially, this portal (mySasin) will be used for their exchange registration. Once they are registered successfully, they will then be able to register for their courses.

Initial Registration requires the following 4 items below:

- Front Face photo (1MB)
- Scan a passport bio page
- Scan a vaccination certificate
- Scan a proof of travel insurance

## Academic Dates

Module 1	August 1 - September 2, 2023
Module 2	September 8 - October 7, 2023
Module 3	October 16 - November 18, 2023
Module 4	November 24 - December 23, 2023
Module 5 (intensive)	January 4 - 14, 2024
Module 6	January 19 - February 17, 2024
Module 7	February 22 - March 23, 2024
Module 8 (intensive)	March 28 - April 9, 2024
Module 9	April 18 - May 18, 2024
Module 10	May 24 - June 22, 2024
Module 11	June 26 - July 27, 2024

**Note: The Sasin academic year begins in July with a pre-module course called Skills & Values. This is not included in the schedule because exchange students cannot register for this module.**

## Sample Course Schedule\*

Module	Date	Day Time 9 AM - 12.30 PM or 1.30 - 5 PM	Evening Time 6 - 9.30 PM	
Module 7	February 22 - March 23, 2024	Investment	Business Strategy	Consumption and Marketing
		Innovation & Design Thinking		Family Business: Managing Growth and Succession
Module 11	June 26 - July 27, 2024	The Age of Disruption: Impact on Business Environments	Digital Transformation: Disruption, Transformation and New Business Models	Data Science and Visualization for Business
		Comparative Business Environment		Brand Management
				New Venture Fundings

\*for example purposes only; actual courses may differ.



## ● Sample Courses

### Data Science and Visualization for Business



**Dr. Stefano Starita**  
Faculty, Management

### Services and Hospitality Marketing



**Dr. Kritika Kongsompong**  
Faculty, Marketing

### Digital Transformation: Disruption, Transformation and New Business Models



**Dr. Jeffrey Towson**  
Digital China/Asia Expert  
Visiting Professor

### Global Perspectives on Family Business & Entrepreneurship



**Dr. Denise Kenyon-Rouvinex**  
Director, IMD Global Family Business Center  
Visiting Professor

### Accounting for Decision Making



**Dr. Mark Finn**  
Clinical Associate Professor of Accounting and International Business  
Kellogg School of Management  
Visiting Professor

### AI & Business



**Dr. Pinnaree Tea-Makorn**  
Faculty, Management

## ● Academic Policies

### Class Attendance

Sasin's attendance rules follow Chulalongkorn University's policies that students must maintain a minimum of 80% attendance in order to complete a course.

**Please note: class schedules may change.**

### Course Registration

Registration takes place about 3-4 weeks before the module starts. There are specific add/drop and withdrawal periods where course selections can be adjusted, but may be subject to certain grade penalties.

**Please note: textbook/course materials are non-refundable.**

### Course Load

Exchange students are expected to take two courses per module. Regular modules have on average 3 to 5 course selections per module; intensive modules have only 1 course offering. Each course, including intensive courses, is worth 3 Sasin credits. 3 Sasin credits is equivalent to 33 contact hours (including exam hours).

### Elective Courses

For more information about elective courses <https://www.sasin.edu/mba-elective-courses>





## ● Estimated Expenses

Typical expenses for a one-month period in Bangkok:

Expense	Price (Baht)
Housing at CU-iHouse	14,000
Utilities-electricity, telephone, etc. (approximately)	900
Meals (three times a day)	3,000
Course materials and academic expenses	2,000
Personal spending money	10,000
<b>Total</b>	<b>29,900</b>

**Note:** Your total expenses will depend on your individual preferences and lifestyle.



## ● Visa Information

After you're accepted into the Sasin program, please contact the Sasin Exchange Coordinator to arrange for an official acceptance letter from Sasin. You will need to submit that letter to your nearest Thai Embassy or consulate to obtain your visa. You can apply for a single or multiple entry "education" (ED), non-immigrant visa, valid for at least 3 months. If you plan to travel in the region during your time at Sasin, we recommend you apply for a multiple entry education visa. (Otherwise, you will need to obtain a separate "re-entry permit" before traveling outside Thailand.)

**\*\*\* Please check with your Thai Embassy/Consulate for current entry procedures, especially pertaining to covid-19. \*\*\***

### Re-Entry Permits

If you plan to travel outside Thailand for a short period and you have single entry education visa, you must apply for a "re-entry permit" at the Immigration Bureau or at the airport before leaving the country. You can request a single entry or multiple entries.

Requirements:

- 1,900 Baht for single re-entry;
- 3,800 Baht for multiple re-entry;
- TM 8 application form
- Your passport
- Your photograph (4 x 6 cm)

Sasin Experience can give you more information or go to <https://www.immigration.go.th>

**\*Note: Fees are subject to change.**



## ● Health Insurance (Required)

We require all exchange students to have international health insurance to cover accidents and health/medical issues during their time at Sasin. You may optionally purchase additional Thai insurance (accident only) through Sasin while you are here. The estimated cost\* is:

- One module = approximately 2,400 Baht
- Two modules = approximately 4,900 Baht

## ● COVID-19

Please check with your local Thai Embassy/Consulate for current entry procedures. Any required quarantine on entering Thailand will be at your own expense.

## ● At Sasin



### Your first day

When you arrive at Sasin, **please call +66 (0)2 218-3850**, or ask for the Sasin Experience team at reception. You will receive your Sasin Student ID and an introduction to Sasin, including a facility tour. Please also bring a photocopy of your passport and visa pages, and be sure to provide us with your local address and contact number (mobile/cell phone) in Bangkok.

### Welcome to Thailand

During your time at Sasin, the Sasin Experience team will welcome you with an optional half-day trip to some of Bangkok's historic and cultural attractions - the Royal Grand Palace Complex (Wat Phra Kaew), Wat Po, or Wat Arun etc.

**Note: Itinerary and availability may be subject to change.**





## ● Accommodation

### On-Campus Housing



**Sasa International House**, closest to Sasin is located within a three-minute walk. Rates are 28,800 baht/month (includes room cleaning service but excludes breakfast & electricity). Please inform Sasin Experience if you would like to book a room here.



**CU iHouse - Chulalongkorn University**, is a short walk from Sasin, just off-campus. Daily rental rate is 700 baht/room/night, and the monthly rate is 14,000 baht/month (twin room with two beds). Upon check in, you must pay the 1-month rental fee and 1-month room deposit for a total of 28,000 baht. Your 1-month deposit will be returned to you after checkout (provided you have stayed to term and there is no damage to the room).

**Note: If the length of your stay changes, you will have to inform CU-iHouse 1-month in order to process the return of your deposit.**

### Off-Campus Housing

There are also serviced apartments in the area that are a 20-minute walk or a short taxi ride from Sasin. For more information, contact [sasinexperience@sasin.edu](mailto:sasinexperience@sasin.edu) for suggestions.

**Note: Any legal matters or disagreements with your off-campus housing owners are your own responsibility.**

**Additional details for on-campus living:**  
[www.chula.ac.th/en/prospective-student/accommodation](http://www.chula.ac.th/en/prospective-student/accommodation)



## Sasin Facilities

### Toemsakdi Krishnamra Hall



Toemsakdi Krishnamra Hall, the focal point of Sasin's newly-renovated space, is used for talks, workshops, and other events, reflecting Professor Toemsakdi's legacy of blending influential people and important ideas.

### Sasa Commons

The ultimate social space where members of the Sasin community and guests can eat, hangout, or have a casual meeting.



### Workshops & Meeting Rooms

A perfect space for collaboration and lifelong learning!



### Café DoiTung



### Health Services



Students can access the Chulalongkorn Health Center (on campus) or Sasin Experience on the 6<sup>th</sup> floor for over-the-counter medicines (such as Tylenol, Actifed, etc.).

Partnered with Chulalongkorn University

### Recreational Facilities

The Chulalongkorn University Recreational Center is only a five-minute walk from the school and the price is affordable. There are also a number of commercial fitness centers near campus.

Partnered with Chulalongkorn University





## ● Getting Around Bangkok

Bangkok public transport is a cheaper and more exciting option, giving you much more local traveling experience. You can find various means of transportation in Bangkok-city trains (metro, skytrains), buses, canal boats, and river ferries.



### Cater To Your Shopping Needs With 5 Best Bangkok Shopping Malls

<https://tourismthailand.sg/cater-to-your-shopping-needs-with-5-best-bangkok-shopping-malls/>



### A Guide to Using Bangkok's BTS Skytrain

<https://theculturetrip.com/asia/thailand/articles/a-guide-to-using-the-bts-skytrain-in-bangkok/>



### Top Destinations Near Bangkok for Your One Day Trip

<https://tourismthailand.sg/top-destinations-near-bangkok-for-your-one-day-trip/>



### The Adventure through Bangkok's Chinatown

<https://tourismthailand.sg/the-adventure-through-bangkoks-chinatown/>





## Contact Information

### Sasin Experience

Email : [sasinexperience@sasin.edu](mailto:sasinexperience@sasin.edu)

Tel : +66 (0) 2 218-3850



**Lisa Leatphaibool**  
Assistant Director  
Sasin Experience



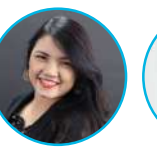
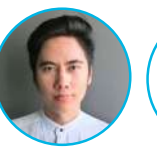
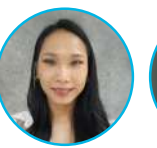
**Kulwadee Boonchamroen  
(Cookie)**  
Student Services  
Sasin Experience



**Kamonchanok Intharat  
(Fang)**  
Student Services  
Sasin Experience

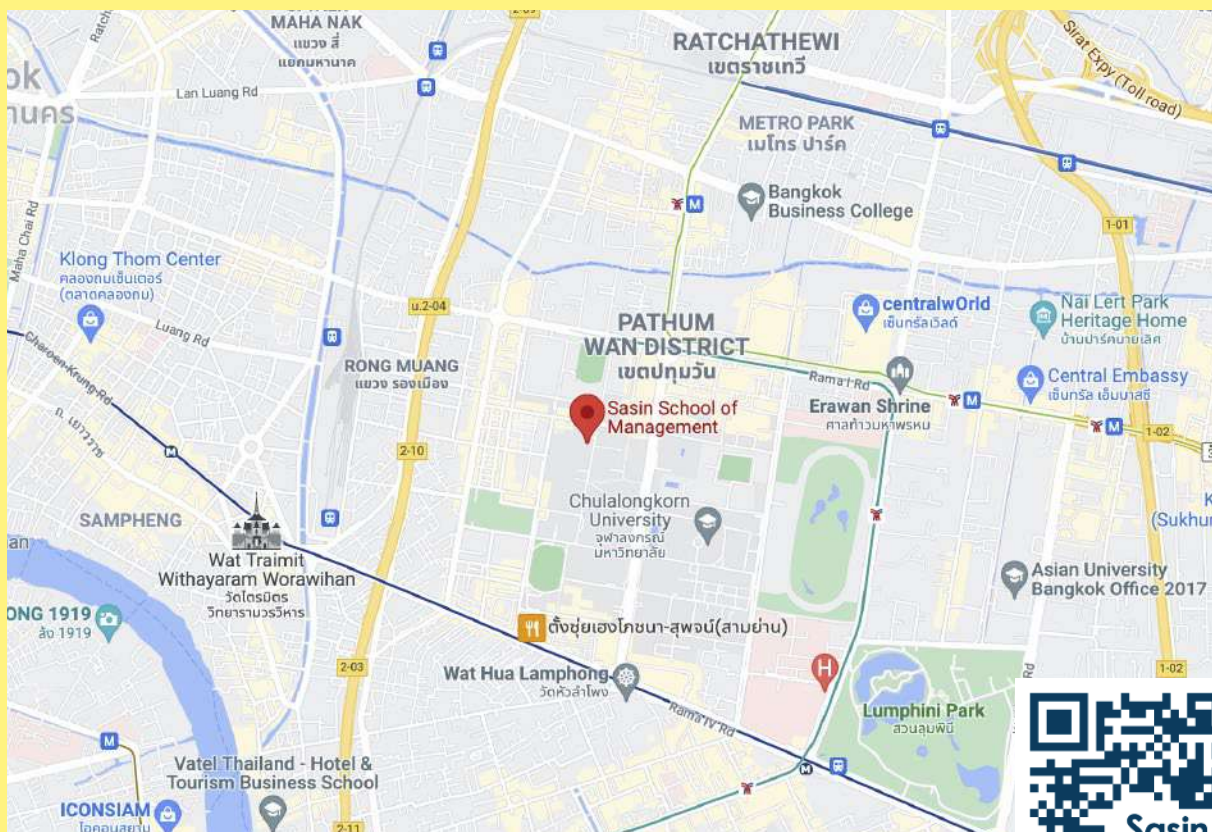
### Sasin Experience

Registrar | Student Services | Alumni Engagement



Sasa Patasala Building (6<sup>th</sup> Floor), Pathumwan, Bangkok Thailand 10330

## Campus Location



**Sasa Patasala Building**  
Soi Chula 12, Phayathai Road  
Bangkok 10330, Thailand



For more information: [www.sasin.edu](http://www.sasin.edu)